



A Report Card for New Hampshire

Presented by the Women's Fund of New Hampshire's Research Committee

POVERTY

Excellent

Satisfactory

Needs Improvement

New Hampshire has one of the lowest poverty rates in the nation, 6% of the population. The average national poverty rate is 12.1%; Louisiana has one of the highest rates at 20%. (American Community Survey Profile - U.S. Census Bureau 2002)

WOMEN AND CHILDREN IN POVERTY

Excellent

Satisfactory

Needs Improvement

Poverty in New Hampshire and across the nation has increased over the past three years.

The *majority of people (66% of those in poverty)* in New Hampshire living in poverty are single women with children. (American Community Survey Profile - U.S. Census Bureau 2002)

A household of one adult with two dependent children, earning \$14,348 or less per year qualifies as "poor" as defined by the Federal Government. If that same household earns \$14,350, it no longer qualifies as "living in poverty." (American Community Survey Profile - U.S. Census Bureau 2002)

WAGES

Excellent

Satisfactory

Needs Improvement

New Hampshire has the lowest minimum wage in the nation, equal to the Federal minimum wage, which is \$5.15 per hour. A full-time employee, working at the minimum wage, will earn \$10,150 per year.

The average childcare worker in New Hampshire earns \$6.75 per hour, most often with no benefits.

The average carpenter in New Hampshire earns \$16.00, most often with health benefits, (Bureau of Labor Statistics, Occupational Employment Statistics Survey). In order to be able to afford a two bedroom rental unit in most areas of the state, a worker must earn at least \$16.49 per hour.

(National Low Income Housing Coalition -2003)

Excellent

Satisfactory

Needs Improvement

According to national statistics, the majority of people working at minimum and low-wage jobs are adult women (60%), and low-wage jobs typically do not provide health insurance or other benefits.

New Hampshire ranks 30th in the nation, 4th in the New England region, for the ratio of women's to men's earnings (the wage gap), with women earning 71.5 cents for every \$1 earned by a male counterpart.

(The Status of Women in New Hampshire, 2002: Highlights, jointly published by the Institute for Women's Policy Research and the New Hampshire Commission on the Status of Women, 2002)

HOUSING

Excellent Satisfactory Needs Improvement

Each night, over 600 children in NH have no secure place to call home. They spend the night in shelters, cars, and doubled up at the homes of others. (Dept. of Health & Human Services Office of Homeless and Housing 2002)

Excellent Satisfactory Needs Improvement

In order to be able to afford a two bedroom rental in most areas of the state, a worker must earn at least \$16.49 per hour. Earning minimum wage, \$5.15 per hour, a worker would need three full-time jobs to afford a basic rental unit. (National Low Income Housing Coalition -2003)

RETIREMENT

Excellent Satisfactory Needs Improvement

Women will outlive men by 3 to 7 years. (Social Security Administration: Women & Social Security) On average, women will have 50% less in retirement savings than men at retirement age. This is a direct result of women's lower earning power and the consequence of women being out of the workforce for periods of time due to responsibility for care-giving. (Social Security Administration: Women & Social Security)

DOMESTIC & SEXUAL VIOLENCE

Excellent Satisfactory Needs Improvement

One out of seven women in New Hampshire has been raped. The majority of victims are young women and girls. (National Violence Against Women Prevention Research Center)

EDUCATION

Excellent Satisfactory Needs Improvement

Each additional level of education that a woman can attain translates into a 10 to 25% increase in earnings. (The Status of Women in New Hampshire, jointly published by the Institute for Women's Policy Research and the New Hampshire Commission on the Status of Women, 2000)

Excellent Satisfactory Needs Improvement

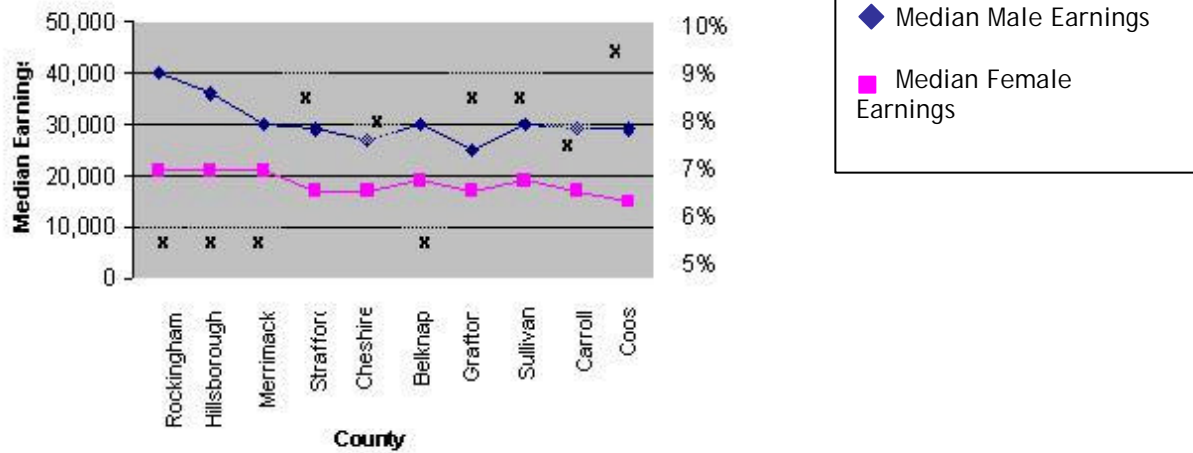
Nationally, a woman holding a bachelor's degree can expect to earn 68% more per year than a woman who holds only a high school diploma. (US Bureau of Labor Statistics)

GIRLS

Excellent Satisfactory Needs Improvement

The teen birth rate is 4 times higher in New Hampshire's poorest communities (40 per 1,000 births) than in wealthier ones (10 per 1,000 births). (NH Adolescent Summit 2003, NH Dept. of Health and Human Services)

**Median Earnings of Males and Females by County in NH
(US 2000 Census Data)**



This chart compares the median earnings of males and females in the ten counties of New Hampshire. The vertical axis on the left shows earnings from zero to \$40,000 a year. The horizontal axis lists the counties that are most affluent in terms of median family income starting with the wealthiest, Rockingham County on the left, and the poorest, Coos County, on the right. The right vertical axis indicates poverty levels in each county, measured in terms of the percentage of persons in poverty.

The chart shows that there is a substantial and consistent gap between male and female median earnings throughout the state, but with female earnings relatively unaffected by the affluence of the richer counties. However, male earnings show a difference, as men living in the more affluence counties earn substantially more than those in the poorer counties. That is not the case for women. Their earnings remain more or less the same regardless of where they live.

Persons in poverty (indicated by the x on the chart) are as expected, with the lowest percentage in the top ranked counties and the highest percentage in the lower ranked counties. Strafford County, with a relatively high poverty rate and Belknap County, with a relatively low poverty rate, do not fit this pattern.